

PLACES OF INTEREST

Visit the Castle District for its spectacular architecture and distinctive character. See Hradčany Square and the monumental Prague Castle, perched above the River Vltava and the City. Take a walk around the Lesser Quarter and enjoy its Baroque charm. Cross the Charles Bridge on the Old Town and spend time in the Old Town Square with its dazzling array of buildings, or visit the fascinating Old Jewish Cemetery. For shopping head for Wenceslas Square or Pařížská Street, the fashionable boulevards lined with stores, shopping centers and restaurants.

TRANSPORTATION TO/FROM HOTEL

- Distance from the International airport: 16 km; Time by taxi: approximately 20 minutes
- Distance from main railway station: 3 km; Time by taxi: approximately 5 minutes

GUEST ROOM INFORMATION

- 192 Classic rooms, 91 Deluxe rooms, 52 Executive rooms and 37 Suites
- 10 connecting rooms, 5 non-smoking floors
- 1 room with disabled facilities

GUEST ROOM FACILITIES

- Satellite TV with more than 45 channels, including Pay TV, Radio, Hotel Info channel
- In-room e-mail access
- Telephone and voice mail. All rooms are equipped with 2 direct dial telephone lines, socket for PC modem connection
- Fax machines available upon request
- High-Speed Internet in all rooms
- Bathrobes, mini bar, in-room safe, hair dryer, iron & ironing board
- Laundry and valet service
- 24-hour room service
- Coffee & Tea facilities in every room

CLUB INTERCONTINENTAL

- Club Lounge where guests can enjoy private check-in, complimentary continental breakfast buffet and all-day refreshments
- Additional fax machine; 2 Computers; Printer; Internet access free of charge

BUSINESS CENTRE AND SERVICES

- Business facilities with fax machine, PC/printer, Internet and e-mail access
- Secretarial services

DINING

- Zlatá Praha - specialty restaurant for formal dining featuring international cuisine
- Open daily for lunch and dinner
- On the top (9th floor) with panoramic view of the city; 100 seats
- Live piano music.
- Primátor - informal restaurant for group lunches and dinners
- Ground floor; 220 seats
- Duke's Bar & Café - bar/café opened daily from 8 a.m. until 2 a.m.
- Ground floor. Live jazz music every Friday and Saturday night

HEALTH CLUB & SPA INTERCONTINENTAL

- Health club - on the lower ground level, with 15 m heated indoor pool, sauna, jacuzzi, massages, sportswear shop, beauty salon, health bar. Changing rooms/shower facilities. Daylight.
- Fitness equipment - wide range of machines including 5 run race, 3 glidex, 2 step race, 5 bikes and body – building equipment
- Golf putting green in the garden

CATERING'S BEST BY INTERCONTINENTAL

- Professionalism; Individual treatment; Creativity and Innovation will turn your event to the event which is hard to forget
- From 5 up to 2000 persons; Tailor made prices
- Experiences from many gastronomical festivals, great chefs, and experienced sommeliers
- Events available within your home as well as in the most representative places in Prague such as Prague Castle, Rudolfinum, Troja Chateau, National Museum, Strahov Monastery, Kaiserstejn Palace, Kaunitz Palace, Lucerna Palace, Sea World or on the boat on the Vltava River and much more.

GENERAL INFORMATION

- Local currency: CZK (Czech Crown); Time: GMT + 1; GPS: 50°5'31.12"N, 14°25'7.79" E



WHERE THE WORLD MEETS...



InterContinental Praha

nám. Curieových 43/5
110 00 Prague
Czech Republic
Tel: +420 296 631 111
Fax: +420 296 631 123
Email: prague@ihg.com
www.intercontinental.com/prague
www.icprague.com
www.icfitness.cz
www.zlatapraharestaurant.cz

CONFERENCE ROOMS

- 13 flexible air-conditioned function rooms with opportunity to combine
- Ballroom dimensions: 21.5 x 25 m with 3.75m ceiling height; 537.5m² area
- Congress Hall accommodates 580 theatre, 402 classroom, 700 reception, 400 banquet style
- Adjacent to the main Congress Hall are three Helena salons with daylight and partition walls, as well as the Vlasta and Diana salons and foyer, naturally lit by a large picture window
- Hi-Tech Audio-visual equipment, one and three phase power; 220/380 V, 50 Hz; stage lights.
- Direct dial telephone lines; ISDN lines; Video conferencing
- High-Speed Internet connection (Wi-Fi) in all conference rooms
- Computers; printers; photocopiers
- Locks on all doors
- Support services available, including florist, photographer, and translation equipment
- The world meets at InterContinental Hotels and Resorts for one-stop meeting solutions, consistently high standards, attention to detail and a personalized service. Whatever your needs are, our experienced convention sales team is always available, and can advise you at every stage of the organization of the event.

HOTEL FEATURES

- Superb location in the Downtown at the Vltava River, close to the Old Town Square and other attractions
- 24-hour front desk; Business center with the access to High-Speed Internet
- 283 rooms and 89 suites and 2 Club InterContinental floors
- Meetings with a view; The largest Conference center in the Old Town
- Excellent meeting facilities for up to 580 in theatre style
- Direct dial telephone lines, ISDN lines, video conference
- 24 hour Health Club & Spa with heated indoor swimming pool and fully equipped Fitness Center and modern treatment rooms
- Concierge Services; Car rental; Shops
- Updated News – digital signage system in the house informs about all functions and important notes and lead quickly to the right direction
- Roof top restaurant Zlatá Praha and seasonal Terrace with magnificent views over the city
- Duke's Bar & Café; Enjoy 43 and Primátor restaurant
- Underground parking 190 places; Valet parking



INTERCONTINENTAL PRAHA

Name of Room	Theatre	Classroom	Cocktail	Banquet	Board table	Area m ²	Dimensions m	Height	Door h/w	Floor
--------------	---------	-----------	----------	---------	-------------	---------------------	--------------	--------	----------	-------

Diana * □	72	52	80	64	36	101,5	14,5 × 7	3,4 (3,0)	3,00 × 2,70	G
Petr □	-	-	-	24	12	30	6 × 5	3,4 (3,0)	0,85 × 1,98	G
Hubert □	-	-	-	24	12	30	6 × 5	3,4 (3,0)	0,85 × 1,98	G
Petr + Hubert □	-	-	-	48	32	60	12 × 5	3,4 (3,0)	0,85 × 1,98	G
Vlasta * □	-	-	-	-	14	46	10,6 × 4,4	2,9	0,82 × 2,35	G
Loreta * □	40	24	30	32	16	55	11 × 5	2,7	0,95 × 2,20	T
Belvedere * □	-	-	30	24	16	73,5	10,5 × 7	2,7 (2,45)	1,60 × 2,20	T
Klementinum * □	60	36	50	48	24	78	12 × 6,5	2,7 (2,45)	0,95 × 2,20	T
Klementinum + Belvedere * □	80	66	100	72	40	104,5	19 × 5,5	2,7 (2,45)	0,95 × 2,20	T
Primátor restaurant *	-	-	450	220	-	431	-	3,7 (3,0)	1,6 × 2	G
Zlatá Praha restaurant *	-	-	200	120	-	372	-	2,7	1,2 × 1,95	T
Zlatá Praha terrace *	-	-	120	-	-	180	16 × 12	-	1,8 × 1,95	T

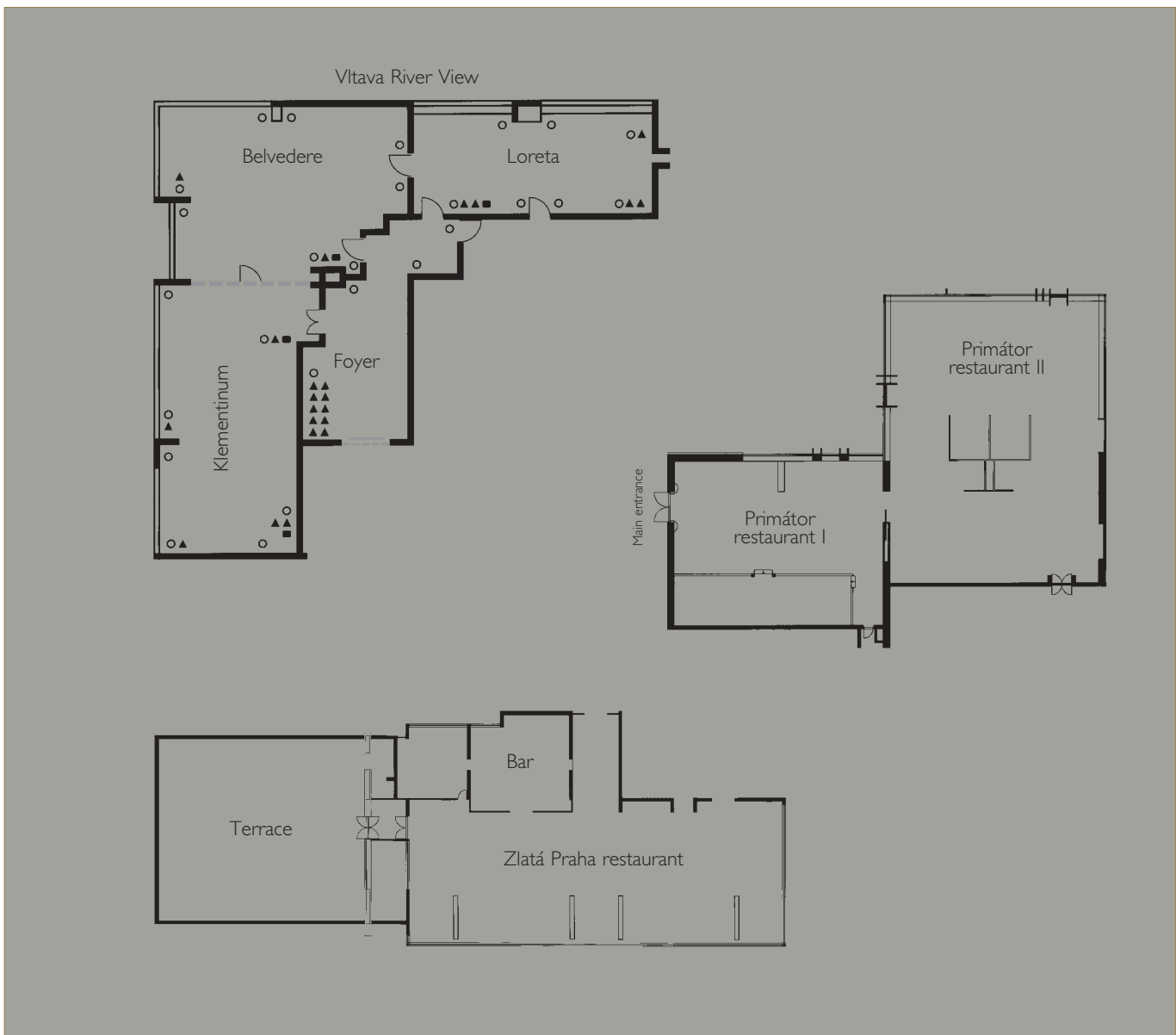
* Natural Daylight

□ Blackout

Dimensions are approximate and in metres

G = Ground

T = Top floor



Diagrams are not scale

○ = Power point

▲ = Telephone point

■ = Television socket

● = ISDN Port

--- = Removable partition

Name of Room	Theatre	Classroom	Cocktail	Banquet	Board table	Area m ²	Dimensions m	Height	Door h/w	Floor
Congress Hall XL *	580	402	700	400	52	537,5	21 x 25	3,75 (2,7)	2,26 X 2,62	G
Congress Hall L □	416	264	500	264	44	387	21 x 18	3,75 (2,7)	2,26 X 2,62	G
Congress Hall □	374	234	350	208	44	301	21 x 14	3,75 (2,7)	1,94 X 2,02 Mobile	G
Congress Hall A □	220	132	180	120	28	196	14 x 14	3,75 (2,7)	1,94 X 2,02 Mobile	G
Congress Hall B □	100	72	80	64	28	98	14 x 7	3,75 (2,7)	1,55 x 2,62	G
Congress Hall C □	40	27	40	32	12	49	7 x 7	3,75 (2,7)	1,94 X 2,02 Mobile	G
Congress Hall D □	40	27	40	32	12	49	7 x 7	3,75 (2,7)	1,55 x 2,62	G
Helena I. * □	40	27	40	32	12	49	7 x 7	3,75 (2,7)	0,80 X 2,03 Mobile	G
Helena II. * □	40	27	40	32	12	49	7 x 7	3,75 (2,7)	0,80 X 2,03 Mobile	G
Helena III. * □	40	27	40	32	12	49	7 x 7	3,75 (2,7)	0,80 X 2,03 Mobile	G
Helena I. + II. (II. + III.) * □	56	42	90	64	28	98	14 x 7	3,75 (2,7)	0,80 X 2,03 Mobile	G
Helena I. + II. + III. * □	112	72	150	72	44	150,5	21,5 x 7	3,75 (2,7)	0,80 X 2,03 Mobile	G

